

New Walking-Working Surfaces and PPE (Fall Protection) Rule

CT River Valley AIHA
Annual All-Day Conference

October 10, 2017

John F. Able, CSP
Occupational Safety Training Specialist
CONN-OSHA
860-263-6902
John.able@ct.gov



Purpose of the New Rule

- To update the outdated Walking-Working Surfaces (subpart D) standard, incorporating new technology and industry practices
- To increase consistency with OSHA's construction standards:
 - Scaffolds (CFR 1926 subpart L)
 - Fall Protection (CFR 1926 subpart M)
 - Stairways and Ladders (CFR 1926 subpart X)

Purpose of the New Rule, cont..

- And to add new provisions to General Industry Personal Protective Equipment (subpart I) that set forth criteria requirements for personal fall protection equipment

Benefits

If you would not want someone you love to be exposed to that Hazard for any length of time, that would be a Serious Hazard.



Organization of Subpart D

§1910.21 – Scope, Application
and Definitions

22 – General Requirements

23 – Ladders

24 – Stepbolts and Manhole
Steps

25 – Stairways

26 – Dockboards

27 – Scaffolds and Rope
Descent Systems

28 – Duty to Have Fall
Protection

29 – Fall Protection Systems
Criteria and Practices

30 – Training Requirements

§1910.21

§1910.21 – Scope and definitions

- Consolidates definitions into one section
- Adds new definitions to provide clarity, such as:
 - Ladder safety system means a system designed to eliminate or reduce the possibility of falling from a ladder. A ladder safety system usually consists of a carrier, safety sleeve, lanyard, connectors, and body harness. Cages and wells are not ladder safety systems.

§1910.21, cont..

§1910.21 – Scope and definitions, cont.

- Travel restraint system means a combination of an anchorage, anchorage connector, lanyard (or other means of connection), and body support that an employer uses to eliminate the possibility of an employee going over the edge of a walking-working surface.



§1910.22

§1910.22– General Requirements

- Competent person means a person who is capable of identifying existing and predictable hazards in any personal fall protection system or any component of it, as well as in their application and uses with related equipment, and who has authorization to take prompt, corrective action to eliminate the identified hazards.

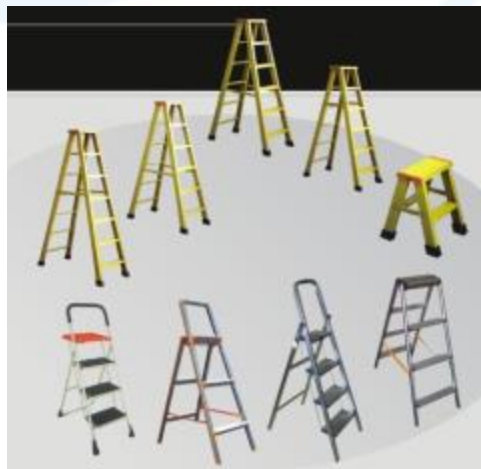
§1910.23

§1910.23 – Ladders.

- Consolidates and simplifies rules into general requirements, portable ladders, fixed ladders, and mobile ladder stands
- Requires inspection before use



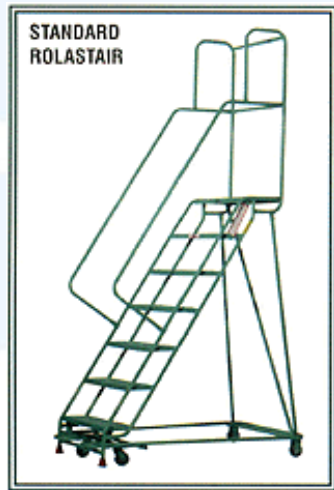
Fixed Ladders



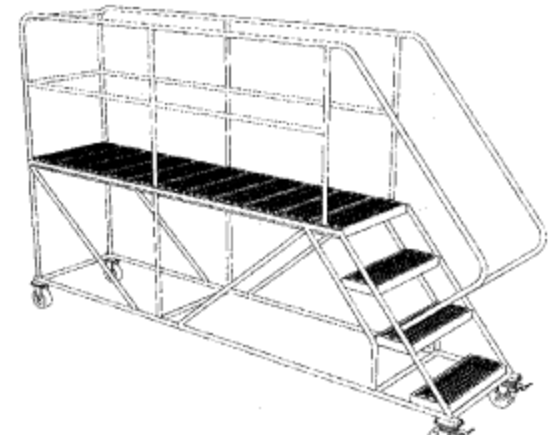
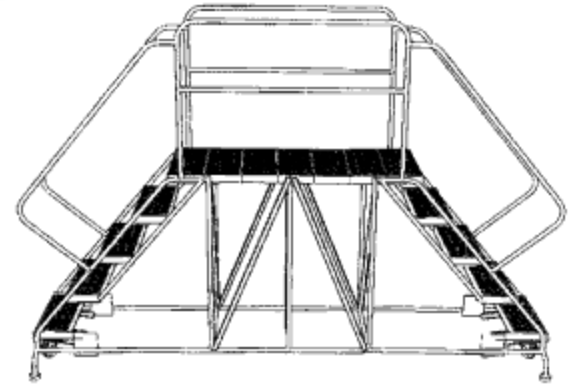
Portable
Ladders and Step Stools

§1910.23 (cont.)

- Updates and makes rule consistent with current national consensus standards



Mobile Ladder Stand



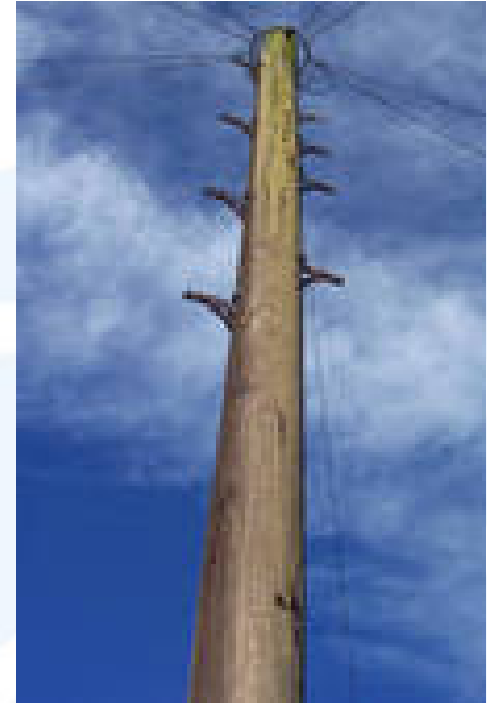
Mobile Ladder Stand Platform

§1910.24

§1910.24 – Stepbolts and manhole steps



- Moves stepbolt criteria from OSHA's Telecommunication Standard to Walking-Working Surfaces
- Makes design, inspection, and maintenance requirements consistent with national consensus standards



Step bolts on pole

§1910.25

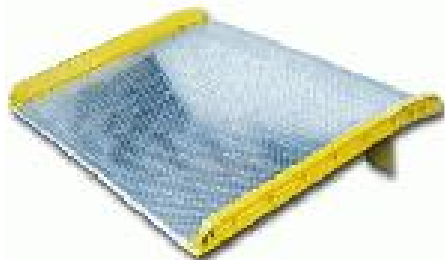
§1910.25 – Stairways

- Adds design and use criteria for spiral stairs, ship stairs, and alternating tread-type stairs
- Updates design criteria for stairs and landings, consistent with national consensus standards

§1910.26

§1910.26 – Dockboards

- Updates requirements for dockboards
- Adds design and construction requirements to prevent equipment from going over the dockboard edge



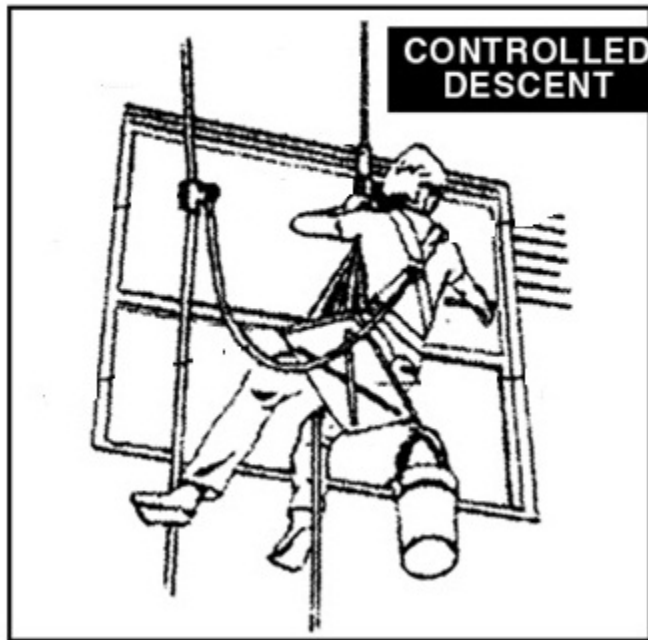
§1910.27

§1910.27 – Scaffolds and Rope Descent Systems (RDS)

- Requires that employers using scaffolds follow the construction standard
- Adds provision allowing use of RDS, which codifies a 1991 OSHA memo allowing RDS
- Requires certification of anchorages starting 1 year after final rule published
- Requires RDS have separate fall arrest system

Rope Descent Systems

ROPE DESCENT SYSTEM (RDS)



§1910.28 – 30 and 140

§1910.28 – Duty to have fall protection and falling object protection

§1910.29 – Fall protection systems criteria

§1910.30 – Training

**§1910.140 – Personal Protective Equipment
(Personal Fall Protection
Systems)**

(See Handout)

Main Effective Dates

- Rule overall: January 17, 2017
- Training: 6 months after publication
- Building anchorages for RDS: 1 year after publication
- Fixed ladder fall protection (>24'): 2 years after publication
- Installation of ladder safety system or personal fall arrest system on fixed ladders: 20 years after publication

Compliance Assistance Resources

- OSHA's new webpage on subparts D&I:
www.osha.gov/walking-working-surfaces/index.html
- Fact sheets
- FAQs

Questions?



I ♥ SAFETY